

My WatchList, Profiles & Audit Applicability

Multiple Profiles - Multiplying Effective Change Management

My WatchList now allows for the creation of multiple Profiles, which can be created for monitoring different bodies of regulations and are integrated with Audit Applicability.

Profiles can also be cloned via the **"Clone"** option. A cloned profile is just that – a copy of the regulations being monitored by the original Profile. This new Profile can be named whatever you wish, and will behave as a separate Profile from now on, however all view history records are copied.

The **"Merge"** features merges two or more Profiles into one larger list of monitored regulations. The new Profile that was created from the others can be renamed by selecting it from the drop-down menu.

When you **"Export"** a Profile, it allows users to easily transfer a Profile to another User. This is useful when an organization wants to make sure multiple Users are monitoring the same regulations or when corporate is setting up the minimum regulations that a plant needs to monitor.

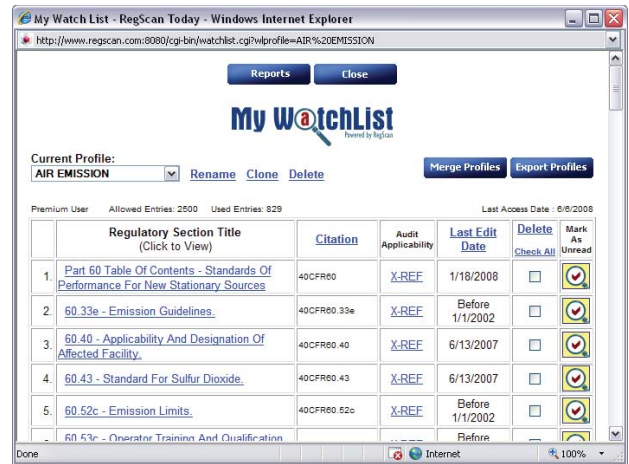
Integration with Audit Applicability

For subscribers who have the US Team Guides™ as part of their license, you can now add citations to your WatchList using the Audit Applicability feature!

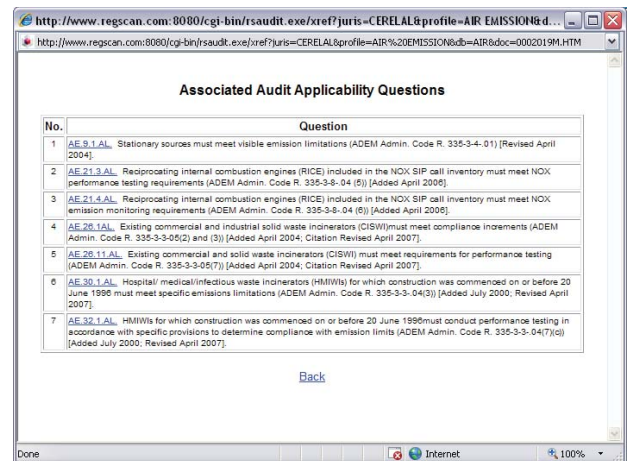
To do this, open Audit Applicability under the US Team Guides™ in the tree-view. Choose the Audit Applicability Profile from your Profile column by clicking on the link. Now you have the option of exporting all unique referenced citations that are part of this audit checklist to your WatchList. This is done by simply clicking the **"Export Citations to Watchlist"** button.

The WatchList Profile generated from the Audit Applicability Profile is identified with an **'AA'** prefix and can be found under the drop down menu with the rest of your profiles. In addition any **'AA'** WatchList Profile in **red** indicates a regulatory change within that profile.

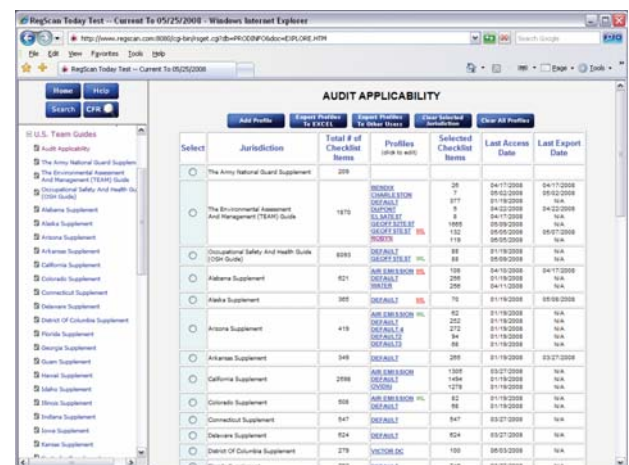
When viewing an AA WatchList profile you will notice there is one additional column titled **X-REF**. This links you back to the audit checklist item where the particular regulation is referenced.



Above: Regulations being monitored with My WatchList.



Above: X-REF displays the associated audit questions.



Above: Audit Applicability displays Profiles being monitored in My WatchList.